

NICDSign Installation Manual for Ubuntu

Contents

1. NICDSign installation in Ubuntu	3
1.1. DSC token driver installation.....	3
1.2. NICDSign installation	3
1.3. Remove NICDSign	5
2. Browser Configuration.....	6
2.1. Mozilla Firefox.....	6
2.2. Google Chrome	9

1. NICDSign installation in Ubuntu

For Ubuntu operating system the following prerequisites are required:

- DSC token driver
- Java8

However, Java 8 runtime is bundled along with the NICDSign Debian package and will be installed and configured along with installation.

1.1. DSC token driver installation

To install DSC driver,

- Make sure you have JRE 1.8 installed
- Use key combination **Ctrl+Alt+t** open terminal
- Enter **java -version** to check installed java version
- Proceed installation, if **java -version** shows to be **1.8**, otherwise install and proceed

```
gst@gstnode1:~$ java -version
java version "1.8.0_144"
Java(TM) SE Runtime Environment (build 1.8.0_144-b01)
Java HotSpot(TM) 64-Bit Server VM (build 25.144-b01, mixed mode)
```

- Copy driver to Desktop. Here for Eg: ProxKey Token.



- To install token driver, open terminal **Ctrl+Alt+t**
- Type **cd Desktop** to go to Desktop
- Install driver using command:

```
sudo dpkg -i wdtokentool-proxkey_1.1.0-1_all.deb
```

```
gst@gstnode1:~$ cd Desktop
gst@gstnode1:~/Desktop$ sudo dpkg -i wdtokentool-proxkey_1.1.0-1_all.deb
[sudo] password for gst:
(Reading database ... 524714 files and directories currently installed.)
Preparing to unpack wdtokentool-proxkey_1.1.0-1_all.deb ...
```

If installation Completes successfully, we can proceed with NICDSign Installation.

1.2. NICDSign installation

Install previous version of DSCSigner already installed by running the following command in the terminal:

```
sudo dpkg --purge dscsigner
```

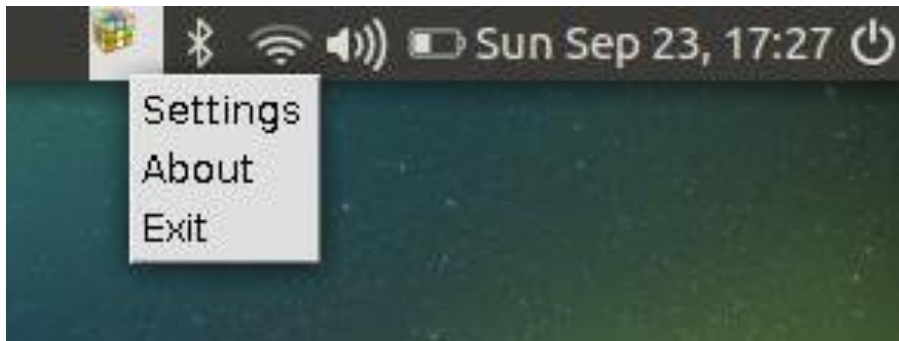
To install NICDSign, open the Terminal and type the following command

```
sudo dpkg -i NICDSign.deb
```

```
s/NICDSign 1.8/NICDSign
elp
NICDSign 1.8/NICDSign$ sudo dpkg -i NICDSign.deb
```

After installation, NICDSign will start automatically once DSC token is connected to the system. Once NICDSign is started, NICDSign icon can be seen in the tray bar with running status.

- On initial run you can see if NICDSign is running by looking at system tray



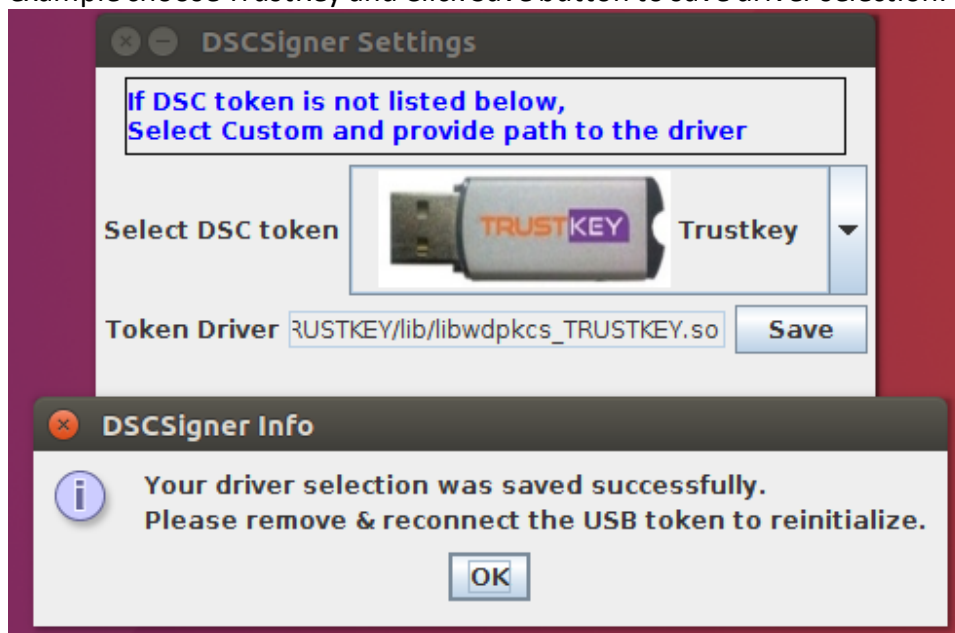
- To select the token driver to TrustKey, install Trustkey driver in your machine and **Right Click NICDSign Icon -> Settings.**



If DSC token is not listed by default, a custom driver selection can be made available where the user can provide their custom driver and reinitialize with the new driver next time.



If DSC token is listed by default then use the dropdown and select appropriate driver, here for example choose TrustKey and Click Save button to save driver selection.



Then you will be shown a message saying token driver saved successfully. Now remove and reconnect your token to reinitialize with new driver.

1.3. Remove NICDSign

To uninstall NICDSign from Ubuntu, run the following command from terminal:

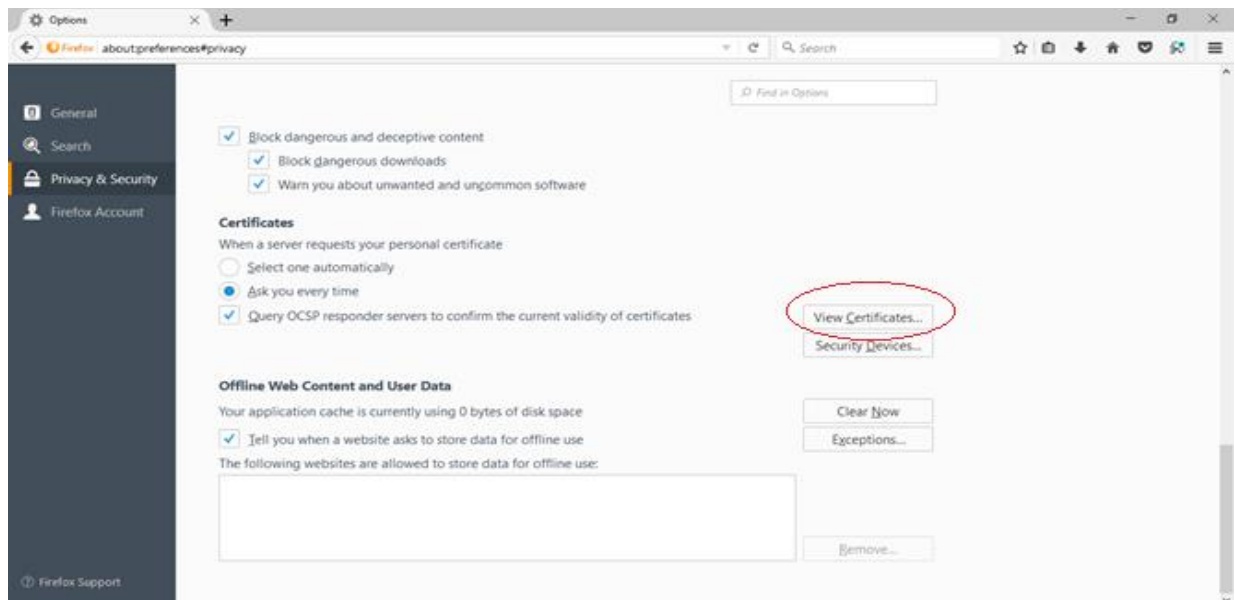
```
sudo dpkg --purge nicdsign
```

2. Browser Configuration

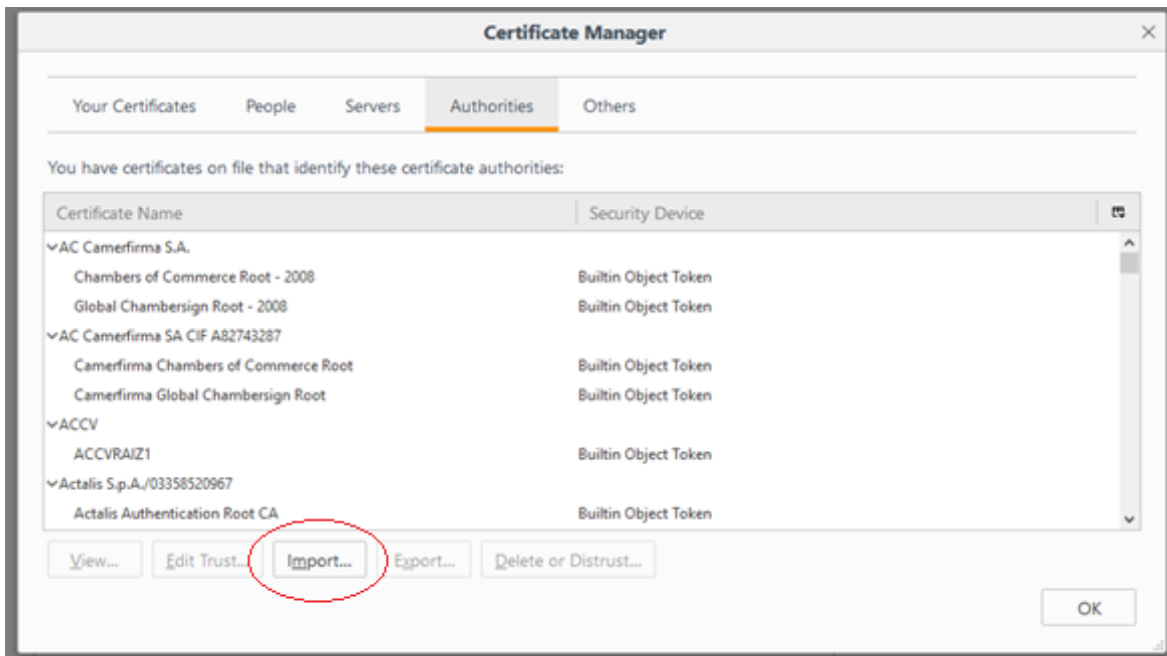
The browser must be configured prior to the use of NICDSign tool to configure the browser to trust the NICDSign Client. The configuration for the browsers are given below.

2.1. Mozilla Firefox

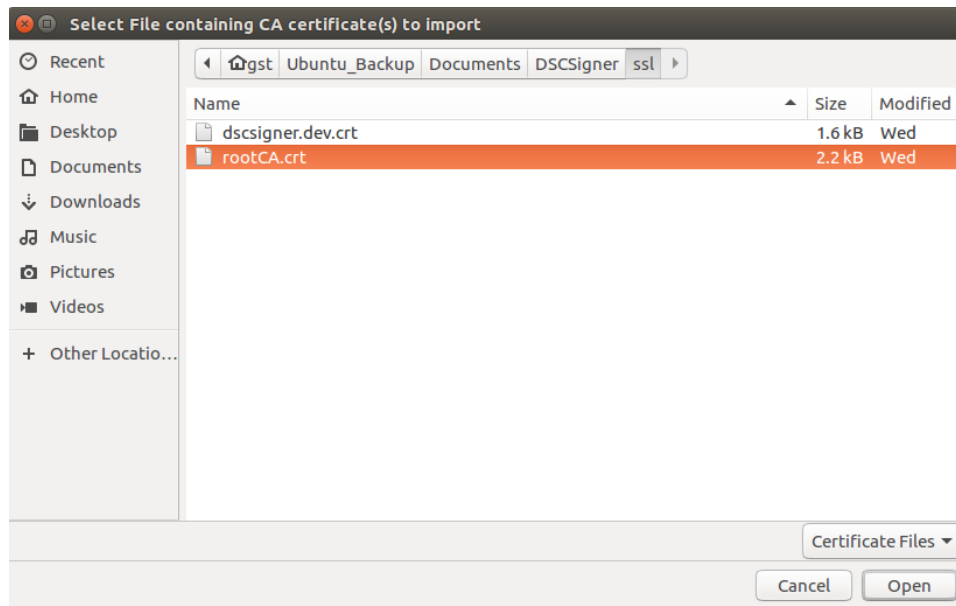
1. Open Mozilla Firefox and type the following in the address bar and press enter.
about:preferences#privacy
2. Scroll down to view the Certificate section and click on the **View Certificates** button to open the certificate manager.



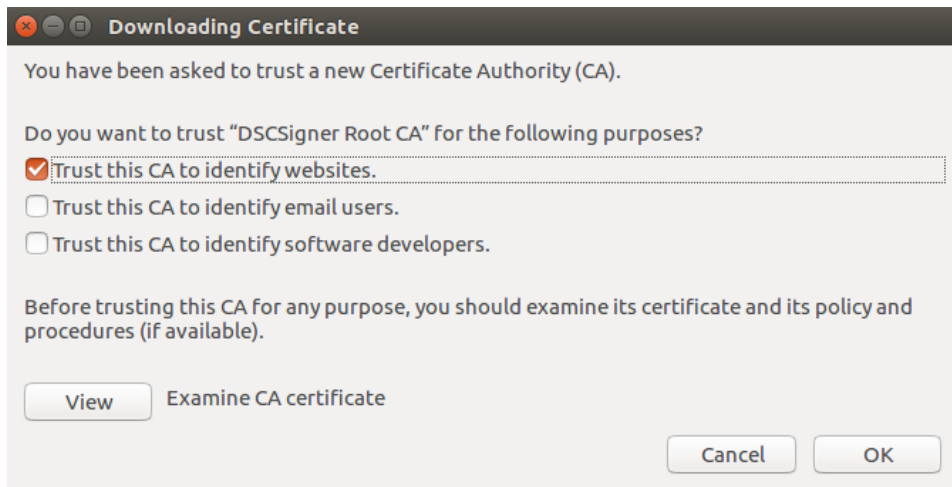
3. In the Certificate Manager popup, click on the Authorities tab and then click on Import button.



4. Browse to NICDSign/ssl folder and select the rootCA.crt file and click on the Open button.



5. Check the **Trust this CA to identify websites** and click on OK button to complete the root certificate export.

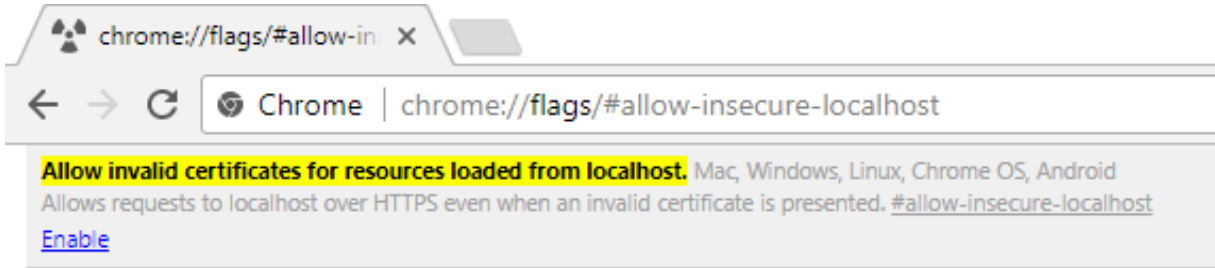


6. The configuration is complete and now you can use Mozilla Firefox for digital signing using NICDSign.

2.2. Google Chrome

1. Open Google Chrome browser and type the following in the address bar and press enter:

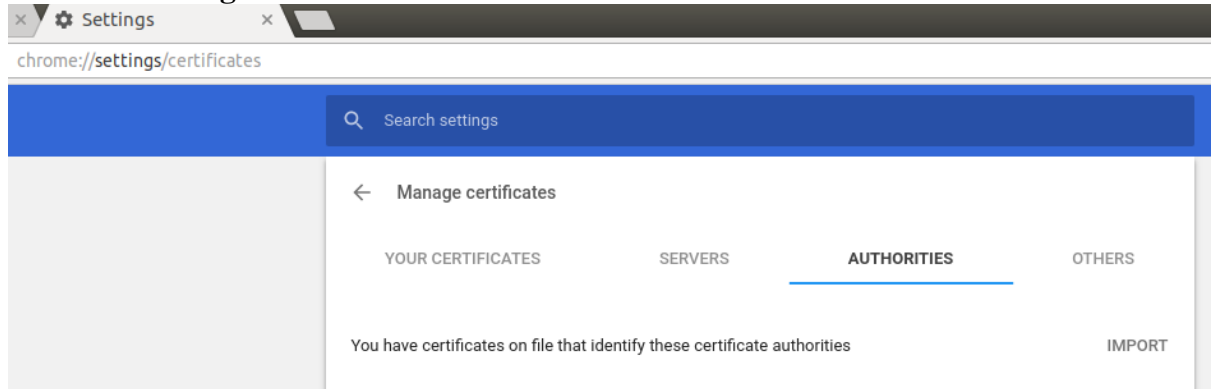
chrome://flags/#allow-insecure-localhost



Click on Enable link to enable

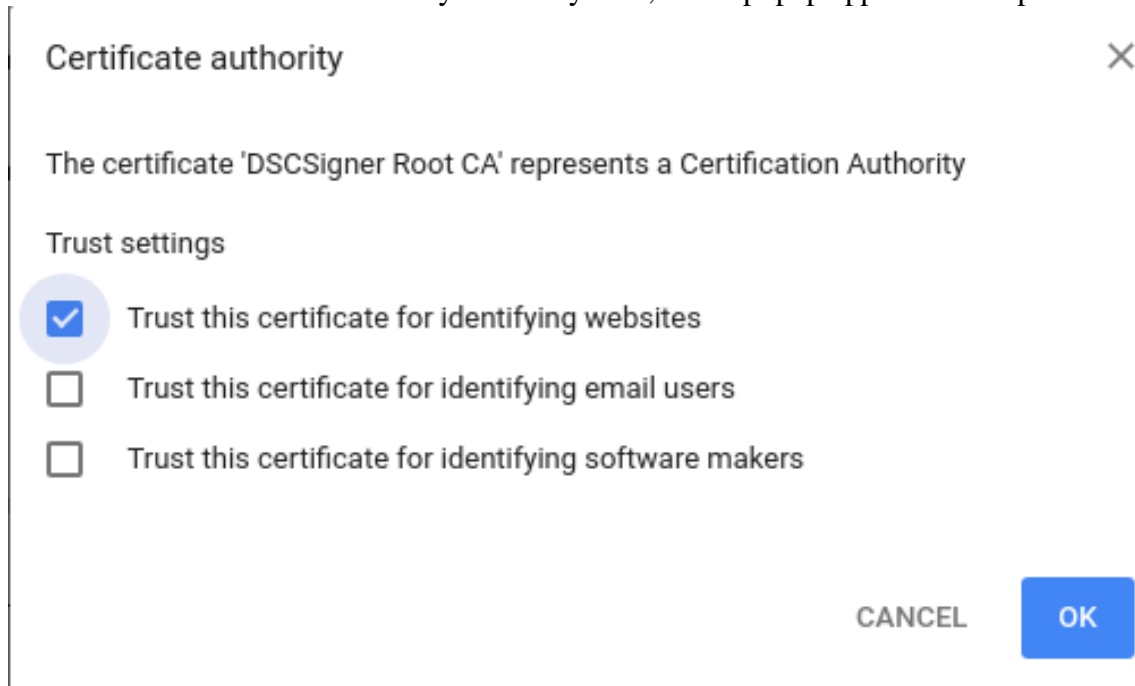
2. On the address bar type

chrome://settings/certificates

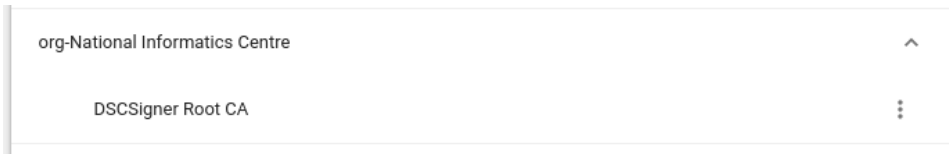


Choose Authorities tab from available tabs and click on the IMPORT link

Choose root Certificate file from your file system, then a popup appears with options



Choose 'Trust this certificate for identifying website' and click OK. The root certificate will be listed under the tab.



Now chrome can be used for signing in Ubuntu.